

cecotec

CAFELIZZIA 790 STEEL/SHINY/WHITE/BLACK

Cafetera espresso/Espresso machine



Cumbia

Manual de instrucciones
Instruction manual
Manuel d'instructions
Bedienungsanleitung
Manuale di istruzioni
Manual de instruções
Instructiehandleiding
Instrukcja obsługi
Návod k použití

1. PARTS AND COMPONENTS

1. Tank cover
2. Water tank
3. Steam knob
4. Control panel
5. Cup/mug tray
6. Steamer
7. Drip tray
8. Single-coffee filter
9. Double-coffee filter
10. Filter holder
11. Portafilter
12. Measuring spoon with tamper
13. Steam button
14. 2-coffee button
15. 1-coffee button
16. Power button

Please note

The graphics in this manual are schematic representations and may not exactly match the appliance.

2. BEFORE USE

- This appliance is packaged in a way as to protect it during transport. Take the appliance out of its box and remove all packaging materials. You can keep the original box and other packaging elements in a safe place. This will help you prevent product damage when transporting it in the future. In case the original packaging is disposed of, make sure all packaging materials are recycled accordingly.
- Make sure all parts and components are included and in good conditions. If there is any piece missing or in bad conditions, contact the official Cecotec Technical Support Service immediately.

Box content:

- Cafelizzia 790 Steel/Shiny/White/Black coffee machine
- Single-coffee filter
- Double-coffee filter

- Portafilter
- Measuring spoon with tamper
- Instruction manual

First cleaning

- Fill the water tank with water. The water level should not exceed the "MAX" mark in the tank.
- Put the filter in the filter holder and insert the portafilter. Ensure the portafilter is aligned with the lock drawing to ensure it is safely assembled. Fig. 2.
- Plug the appliance into a power supply. Make sure the steam knob is in the Off position and press the power button. The machine will beep. The 1-coffee and 2-coffee indicator lights will turn on and the coffee machine will start pre-heating.
- Once the 1-coffee and 2-coffee indicator lights light up steady, press the 1-coffee button. The coffee machine will start the cleaning process.

Note

If you want to carry out a more thorough cleaning cycle of the coffee machine's inside parts, use a 1:4 solution of vinegar and water, or use descaling product. Repeat this process just with water to remove any rests.

3. OPERATION

- Fill the water tank without exceeding the MAX mark. Use mineral water for better maintenance of the appliance.
- Connect the coffee machine to a power supply and make sure the steam knob is set to the Off position. Turn on the coffee machine.

Espresso

- While the coffee machine preheats, place the desired coffee filter in the portafilter and fill it with coffee powder. Use the measuring spoon with tamper to fill the filter with coffee and press it. 1 tablespoon is equal to 1 coffee dose. Clean the excess coffee from the filter's edge. Fig. 3.
- Insert the portafilter in the appliance and lock it tightly. Fig. 4.
- Once the 1-coffee and 2-coffee indicator lights switch from blinking to steady, press the desired coffee button for the machine to brew 1 or 2 coffees.

Note

Make sure you have previously placed an appropriate cup or cups under the coffee spout.

Milk froth

- With the coffee machine switched on and preheated, press the steam button. The steam indicator light will flash and then remain steady when the preheating process is complete.
- Pour milk into the container where you want to froth milk. Fill up 1/3 of the container.

Recommendation: it is recommended to use cold whole milk for optimal results.

- Place an empty glass under the steamer, turn the steam knob to the steam/water position, and let the steamer emit steam before frothing the milk. Once some steam has been emitted, disable the steam function by returning the steam knob to the Off position, insert the steam tube 1 cm into the milk, and turn the steam knob slowly counterclockwise until steam is produced.

Fig. 5.

1. Switch-off
2. Steam/water

Note

The steamer may drip a little before producing steam.

When milk temperature starts to rise (to up to 75 °C) and milk froth volume starts increasing, turn the steam knob clockwise to the Off position and press the steam button to stop the steam function.

Warning

Clean the steam outlet with a wet sponge immediately after use. Then, remove the steamer and clean the duct interior part. Moreover, it is advisable to emit steam into an empty glass to get rid of any traces of milk left.

Hot water

- With the coffee machine switched on and preheated, turn the steam knob to the steam/water position. The steamer will start dispensing hot water.
- Turn the steam knob back to the Off position to disable this function.

Memory function

- Once the coffee machine has preheated and the 1-coffee and 2-coffee indicator lights light up steady, hold down the 1-coffee button. The coffee machine will start brewing coffee.
- Once the desired amount of coffee has been obtained, stop pressing the 1-coffee button. The machine will emit a sound, indicating it has saved the quantity.
- The coffee machine brews coffee 60 seconds approx. by default, which is the maximum time coffee can be brewed and saved.

Note

The setting will not be registered and saved unless the button is pressed for long enough.

- If you want to prepare a larger espresso or 2 espressos, follow the steps above and use the 2-coffee button instead of the 1-coffee one.

Factory settings

If you want to restore factory settings, hold pressed the 1-coffee button and the steam button for 3 seconds. The appliance will beep once indicating factory settings have been successfully restored.

Cooling down the appliance

- After steam is emitted or coffee is brewed, the appliance's temperature is likely to increase significantly, which means that all of its components will become very hot as the appliance has been operating at high pressure. Both indicator lights, 1 and 2 coffees, will start blinking quickly, indicating the appliance temperature has to be decreased.
- To cool down the appliance:
 1. Rotate the steam knob to the water position, the machine will start dispensing water for a few seconds.
 2. When the indicator lights start flashing slowly, turn the steam knob to the Off position.
 3. When the power indicator lights light up steady, the appliance will be ready for use again.

Please note

The coffee machine features an auto-off safety system that activates after 25 minutes the machine is not being used.

4. CLEANING AND MAINTENANCE

- Disconnect the appliance from the power supply and allow it to cool down completely before cleaning.
- Do not use abrasive cleaners or scouring pads, as they could cause damage to the appliance's surface.
- Use a soft, dampened cloth to clean the outer part of the appliance.
- Do not immerse the main body in water or other liquids.
- Wash the water tank, drip tray, and cup/mug tray regularly.
- After using the steam function, the tube must be cleaned with a cloth immediately after. Be careful not to burn yourself! Allow steam to be released to avoid possible blockages inside the tube.
- If the steamer is clogged, use a needle to unblock the conduct.
- Remove the portafilter after every use and empty the coffee residue. Then, use water and a cloth to clean it. Do not wash it in the dishwasher.
- Clean all parts with water and dry thoroughly before storing it or using the appliance again.

Cleaning mineral deposits or descaling

1. Mineral deposits built up in the unit might affect the machine's operating. It is important to remove and clean them to keep the coffee machine operating efficiently. The quality of the water being used and type of use will determine how often these deposits have to be cleaned. It is recommended to carry out a cleaning cycle after each 250 uses.
2. Fill the water tank to the MAX mark and add a descaling agent. Put the portafilter in place. Place one container under the portafilter, another under the steamer, and enable the coffee and hot water functions alternately until the tank is completely empty.
3. Finally, carry out the same procedure but with clean water to completely clean the appliance of any descaler residues.

Note

Use the water and descaling agent proportions indicated on the appliance's packaging.

5. TROUBLESHOOTING

Problem	Possible causes	Possible solutions
Coffee does not come out.	No water in tank. Coffee grind is too fine. There is too much coffee in the filter. The appliance is not turned on or connected to the power supply. Coffee has been tamped/ compressed too much.	Add water. Grind medium-ground coffee. Fill filter with less coffee. Connect the unit to a power supply and turn it on. Refill the filter basket with coffee, do not tamp too much.
Too little coffee comes out or there's almost no pressure.	Mineral deposits in the appliance.	Carry out a full descaling of the appliance.
No water/steam.	There is no water in the water tank or it is not installed properly. The machine is not preheated. The steamer is clogged.	Fill the water tank with water and turn on the appliance. The machine needs to be hot before emitting water/steam. Once the machine is preheated, the indicator light will turn on. Clean the steamer with a needle or fine wire. Perform a complete descaling.

Coffee comes out around the edge of the portafilter.	Portafilter not rotated to full lock position. There is ground coffee on the edge of the filter. There is too much coffee in the filter.	Rotate filter holder to full lock position. Wipe off the rim. Fill with less coffee.
Coffee is too light.	Coffee is not enough ground or the grounds are not pressed enough.	Use a finer grind or use the measuring spoon with tamper.
Coffee is not brewed well.	Too much or too little coffee powder.	1 coffee requires 1 tablespoon of coffee and must be properly pressed. Coffee powder cannot be too thick or too fine. Too thick coffee cannot be completely extracted, too fine will affect the amount and quality of coffee.
Milk is not properly frothed.	The milk used is not suitable for this function. The steam function was enabled before the indicator light turned on.	Use whole cold milk. Steam can only be released after the steam indicator light changes from flashing to steady light.
The indicator lights blink.	The temperature has risen sharply after using the steam function.	Cool down the appliance.

6. TECHNICAL SPECIFICATIONS

Product: Cafelizzia 790 Steel / Cafelizzia 790 Shiny / Cafelizzia 790 White / Cafelizzia 790 Black

Product reference: 01582 / 01583 / 01650 / 01651

Voltage and frequency: 220-240V ~ 50/60 Hz

Power: 1350 W

Technical specifications may change without prior notification to improve product quality.

Made in China | Designed in Spain

7. DISPOSAL OF OLD ELECTRICAL AND ELECTRONIC APPLIANCES



This symbol indicates that, according to the applicable regulations, the product and/or batteries must be disposed of separately from household waste. When this product reaches the end of its shelf life, you should dispose of the cells/batteries/accumulators and take them to a collection point designated by the local authorities.

Consumers must contact their local authorities or retailer for information concerning the correct disposal of old appliances and/or their batteries.

Compliance with the above guidelines will help protecting the environment.

8. TECHNICAL SUPPORT AND WARRANTY

Cecotec shall be liable to the end user or consumer for any lack of conformity that exists at the time of delivery of the product under the terms, conditions, and deadlines established by the applicable regulations.

It is recommended that repairs be carried out by qualified personnel.

If at any moment you detect any problem with your product or have any doubt, do not hesitate to contact the official Cecotec Technical Support Service at +34 963 210 728.

9. COPYRIGHT

The intellectual property rights over the texts in this manual belong to CECOTEC INNOVACIONES, S.L. All rights reserved. The contents of this publication may not, in whole or in part, be reproduced, stored in a retrieval system, transmitted, or distributed by any means (electronic, mechanical, photocopying, recording or similar) without the prior authorization of CECOTEC INNOVACIONES, S.L.

1. PIÈCES ET COMPOSANTS

1. Couvercle du réservoir
2. Réservoir d'eau
3. Sélecteur de la vapeur
4. Panneau de contrôle
5. Plateau pour verres/tasses
6. Buse vapeur
7. Plateau d'égouttage
8. Filtre pour 1 café
9. Filtre pour 2 cafés
10. Porte-filtres
11. Bras de la machine à café
12. Cuillère doseuse/presse
13. Bouton de vapeur
14. Bouton pour 2 cafés/café double
15. Bouton pour 1 café
16. Bouton de connexion

Note

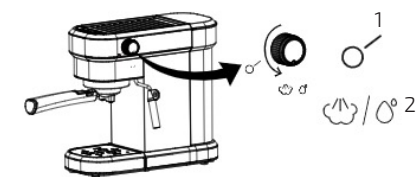
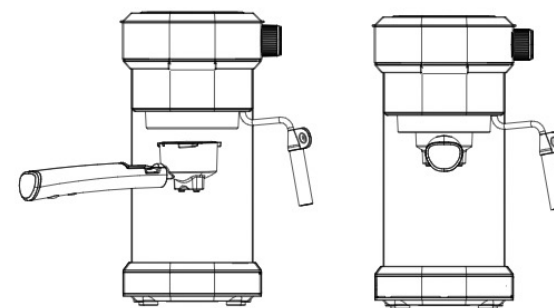
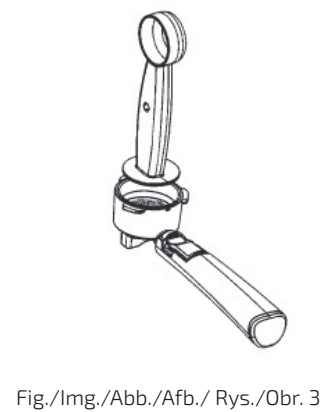
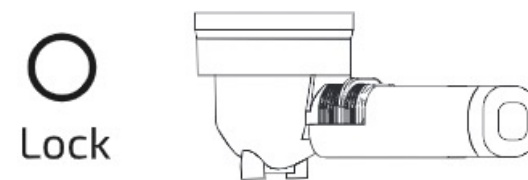
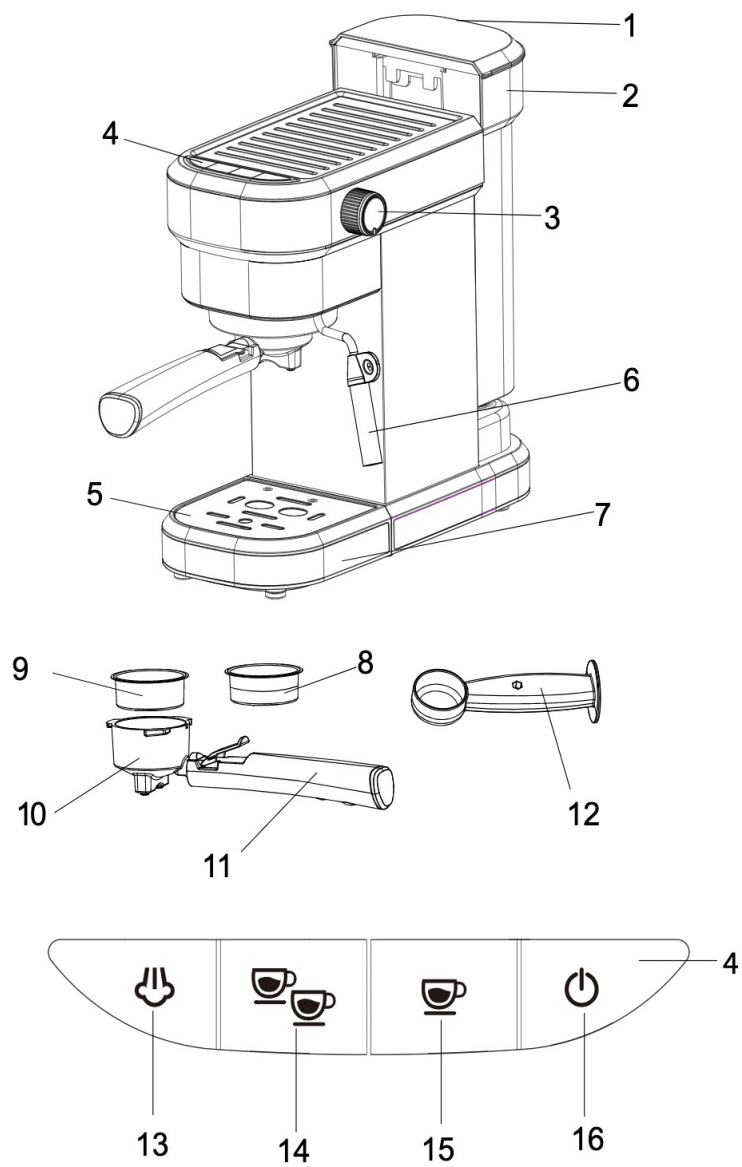
Les graphiques de ce manuel sont des représentations schématiques et peuvent ne pas correspondre exactement à ceux du produit.

2. AVANT UTILISATION

- Cet appareil possède un emballage conçu pour le protéger pendant son transport. Sortez l'appareil de sa boîte et retirez tout le matériel qui compose l'emballage. Rangez la boîte d'origine et le reste des éléments provenant de l'emballage dans un endroit sûr pour éviter d'endommager l'appareil si vous devez le transporter à l'avenir. Si vous devez vous défaire de l'emballage d'origine, assurez-vous de recycler tous les éléments correctement.
- Assurez-vous que toutes les pièces et les composants sont inclus et en bon état. S'il manque une pièce, une partie, un accessoire ou que l'appareil ou ses accessoires ne sont pas en bon état, veuillez contacter le Service Après-Vente officiel de Cecotec.

Contenu de la boîte :

- Machine à café Cafelizzia 790 Steel/Shiny/White/Black
- Filtre individuel pour un café
- Filtre pour 2 cafés



www.cecotec.es

Cecotec Innovaciones S. L.
Av. Reyes Católicos, 60
46910, Alfafar (Valencia), Spain

EA04230313